



Digi-Trac Pro

Intelligent Digital Monitoring



Digi-Trac Pro Overview

- Digi-Trac Pro monitors and records real-time status of your shipment for impacts, temperature, humidity, pressure, location, and light intrusion during the full transportation chain.

Transportation Chain



Accurate GPS location monitoring

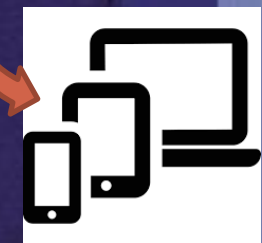
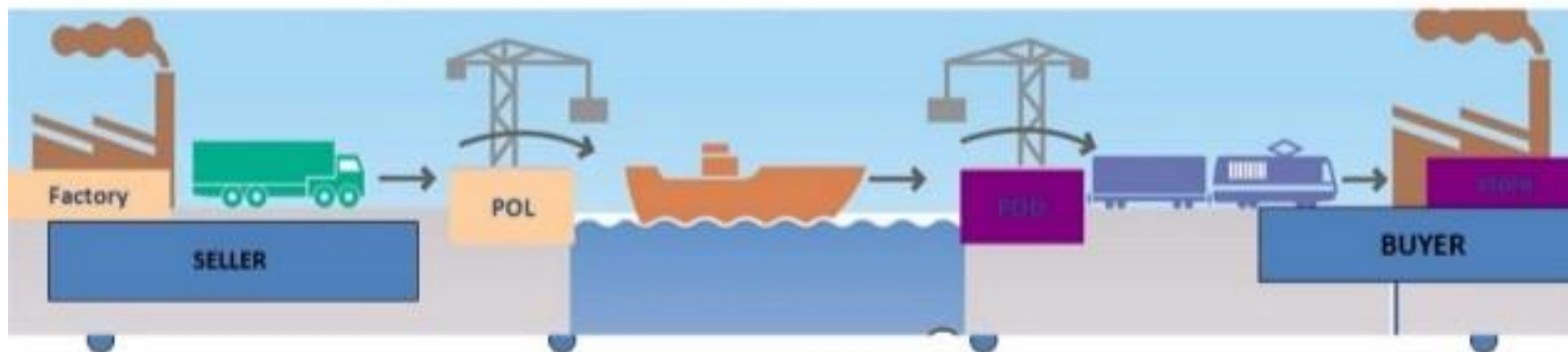
Secure cloud based software captures all data from Digi-Trac



Digi-Trac communicates data via cellular to cloud based software



Add Digi-Trac to each shipment to monitor



Real-time status right to your computing device

Features & Benefits

Features	Benefits / Description
Real Time Monitoring	Know exactly what is happening to your shipment and where it is at any time. Cellular connectivity provides all data to cloud based Digi-Trac software. GPS provides exact location.
Full Array of Sensors	Digi-Trac provides multiple sensors to monitor shock, temperature, and light intrusion. No extra device is needed.
Flexible Sensor Settings	Monitor what you require by controlling which sensors are activated. Easy device set-up lets you activate the sensors that you need.
Cloud Based Software	Shipment data can be accessed from any device with Internet connection. Allows for multiple authorized users to view data by signing onto our secure server to view the status of your shipment.
GPS (Global Positioning System)	GPS provides the highest accuracy to pinpoint exactly where your shipment is located.

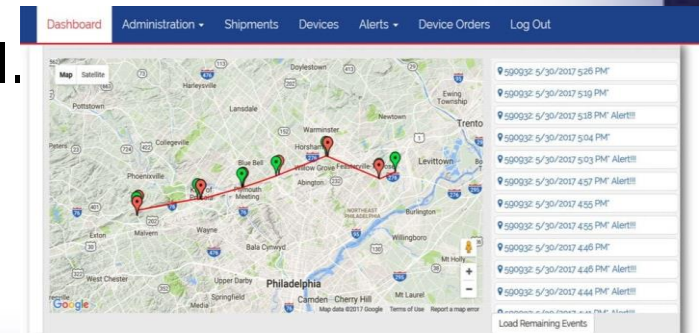
Features & Benefits

Features	Benefits / Description
High Accuracy Accelerometer	Sophisticated accelerometer delivers precise G Force results recorded for analysis. Includes impact duration.
Long Battery Life	A high quality Lithium ION battery is used for reliability and performance. Provides up to 6 months charge with 6 updates per day before re-charging.
Secure Data	In the event of out of range communication, your sensor data is captured and secure. Updates can be downloaded when communication is restored.
Full Featured Mission Control Software	Advanced software keeps you in control. Administrative tool allows you to set parameters for all sensors. Mission summary provides all data from the mission start and stop dates. Tracks multiple devices by individual serial numbers.

Cloud Solution Software



- Shipment Mission data is communicated via the Internet to Digi-Trac cloud software.
- Access shipment data for impact, temperature, humidity and pressure at anytime through a secure customer portal.
- Monitors and manages data from multiple devices
- Provides easy to read graphs and mapping location for quick visual read.
- Delivers real-time alerts via text or e-mail.



Customer Value

- Helps reduce the high cost of supply chain damage through real-time shipment monitoring.
- Helps identify optimal modes of transportation, routes, packaging, storage options, and operational conditions through full-journey profiling.
- Allows for immediate corrective action in cases of potential impact, temperature extremes or other parameters.
- Pinpoints potential areas for improvement in operational or shipping and handling processes.
- Global communication to monitor your device 24/7.

About Impact-O-Graph

- Impact-O-Graph Devices (IOG Products LLC) is a leading manufacturer of impact and monitoring devices that are sold and used globally
- Impact-O-Graph is ISO certified and takes great pride in the highly reliable and accurate devices that we manufacture
- Our devices are used during the transportation supply chain to identify and detect potential incidences of damage or mishandling
- Impact-O-Graph products are cost effective, high quality devices that enable customers to reduce their risks, cost of operations, and protect their valued reputations and business relationships

For More Information

- Contact: Darryl Termine
VP Sales and International Business Development

E-mail: dtermine@iogproducts.com

Phone: (610) 251-6963